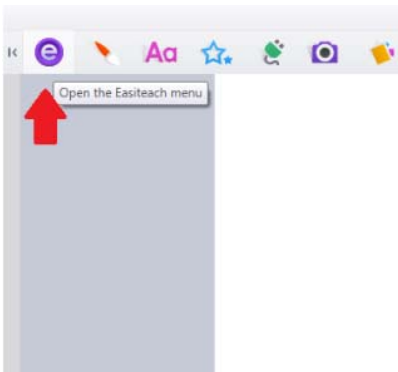
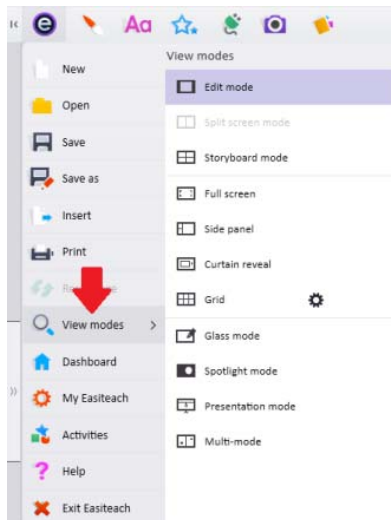


What is “Curtain Reveal” and how do I use this feature?

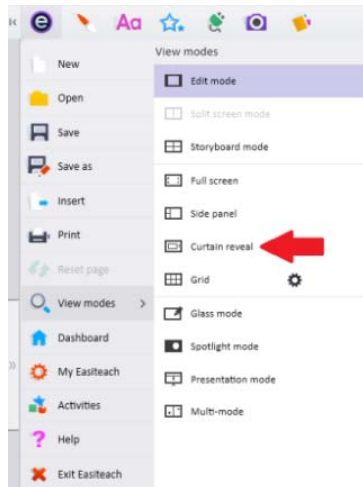
- The **Curtain reveal** is good for hiding part of an answer or a whole answer; such as, “Guess the Letter”, “Guess the Word”, “Guess the Shape”, or “Guess the Number”. For example, write a compound word on the screen and then cover the latter compound (i.e. base-ball). Reveal the first part of the compound and as children guess the second part, slide the ‘**Curtain**’ to the right (left, up or down). To implement **Curtain reveal**, follow these simple steps:
- **Step 1:** Open a Teaching Guide activity and locate the **Easiteach™ menu icon** in the top left-corner (as shown in the below image). Click or touch to expand the Menu:



- **Step 2:** Touch or click **View modes** to expand the menu (as shown in the below image):



- **Step 3:** Select **Curtain reveal** from the menu choices (as shown below):



- **Step 4:** The **Curtain reveal** feature appears and you can move the shade up and down, or side-to-side (using one or more of the handles as shown in the below image). To remove the curtain, click **Curtain reveal** again:

