

Configuring ECLaunch to Auto-Launch in Windows 10

Contents:

Part 1 – Setting the application to run as administrator

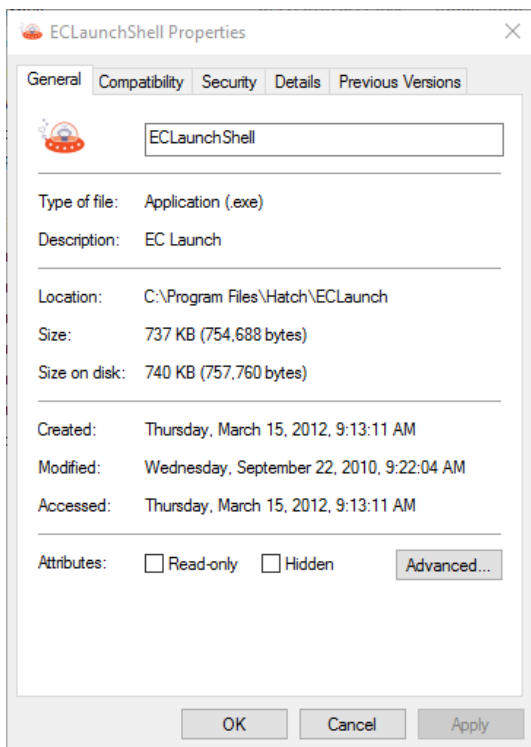
Part 2 – Disable UAC pop ups

Part 3 – Installing new driver to disable Ctrl+Alt+Del

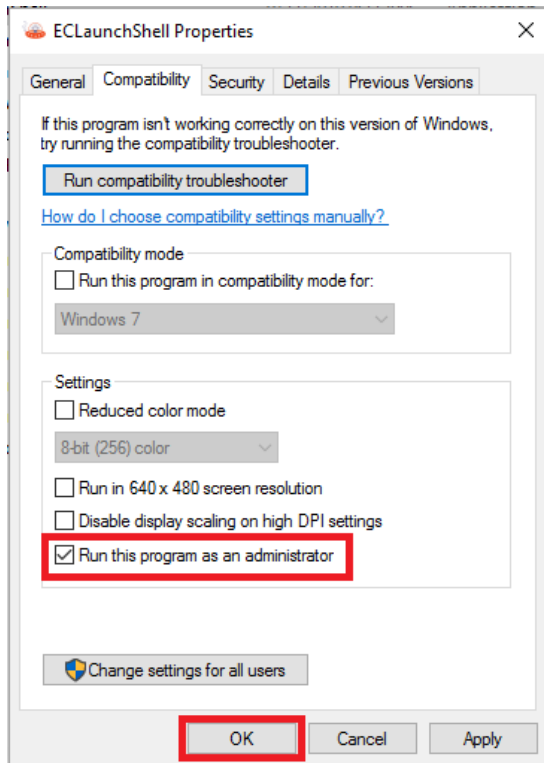
Part 4 – Modifying startup folder

Part 1 – Setting the application to run as administrator:

1. Navigate to “C:\Program Files\Hatch\ECLaunch\”
2. Right click on “ECLaunchShell” application and choose “Properties”

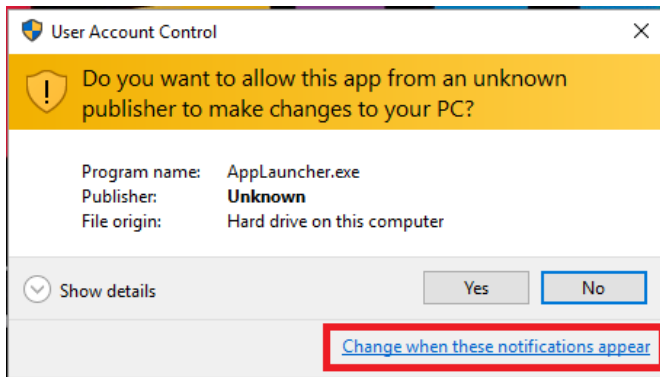


3. Select the “Compatibility” tab and check the box for “Run this program as an administrator” then click “OK”

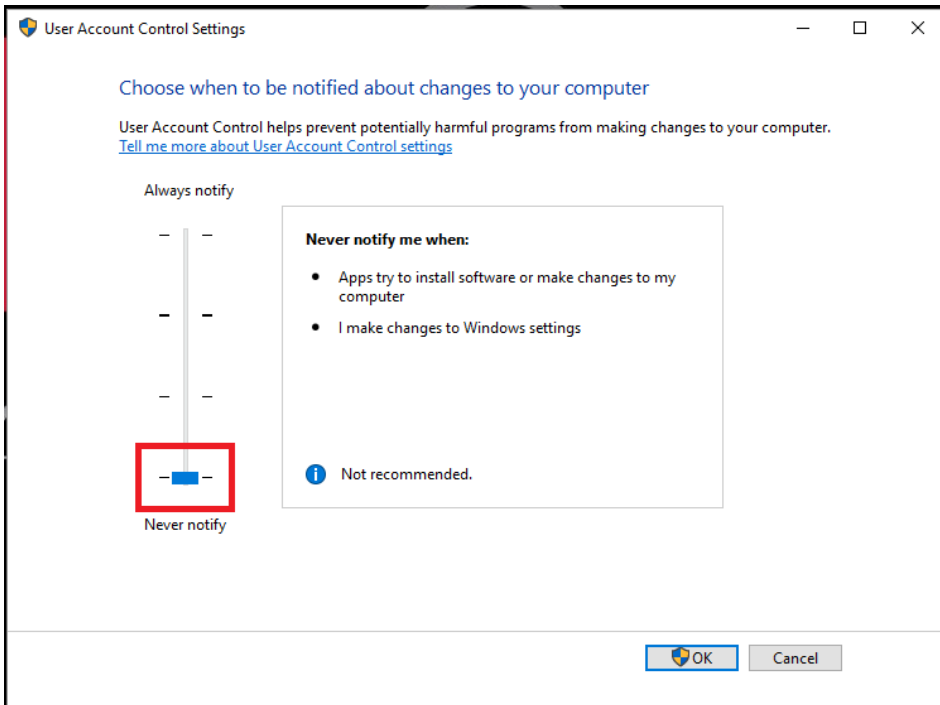


Part 2 - Disable UAC pop ups:

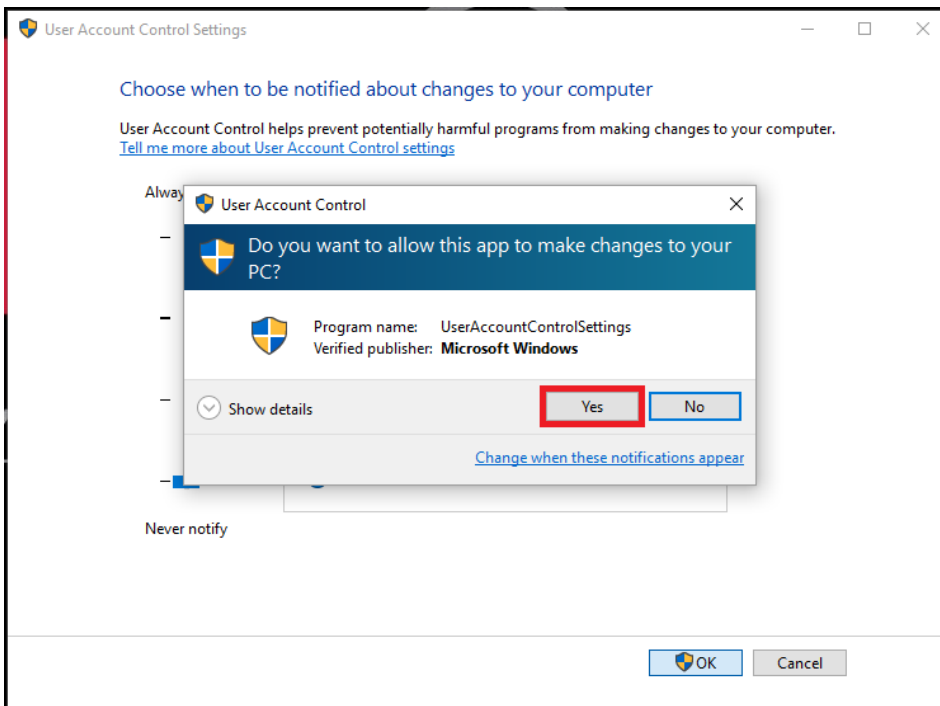
1. Launch "ECLaunch" from the desktop
2. When you see the message below, click "Change when these notifications appear"



3. Drag the blue bar down to the bottom/last option to "Never notify" and click "OK"

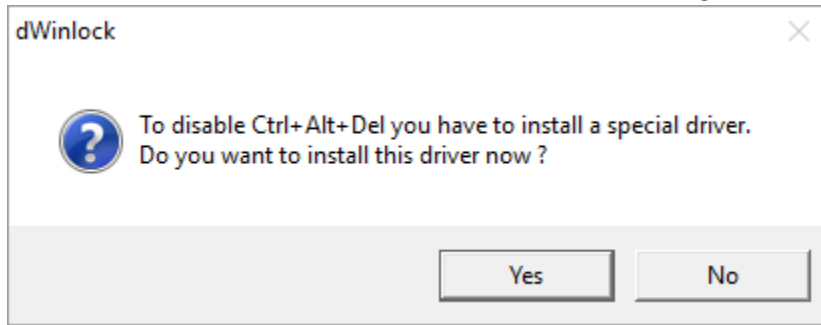


4. Click "Yes" on the User Account Control pop up message

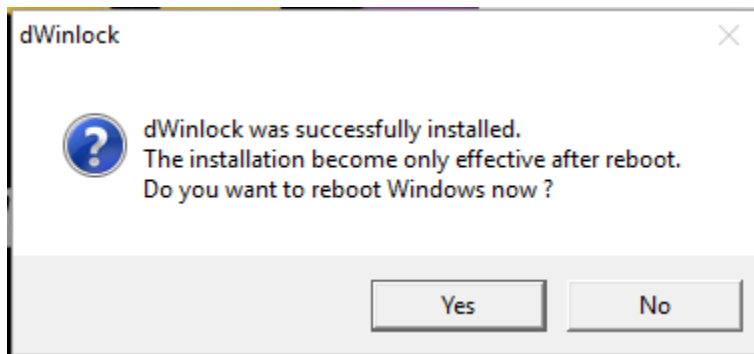


Part 3 - Installing new driver to disable Ctrl+Alt+Del:

1. Launch "ECLaunch" from the desktop and you should be prompted to install a special driver to disable the Ctrl+Alt+Del function while ECLaunch is running. Click "Yes".

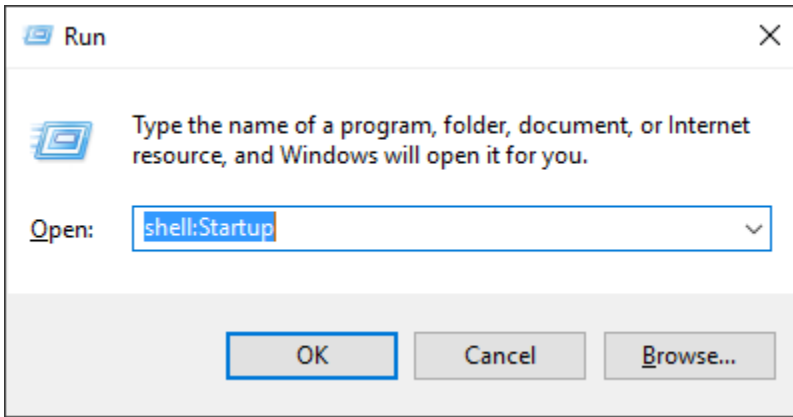


2. Click "Yes" to reboot.

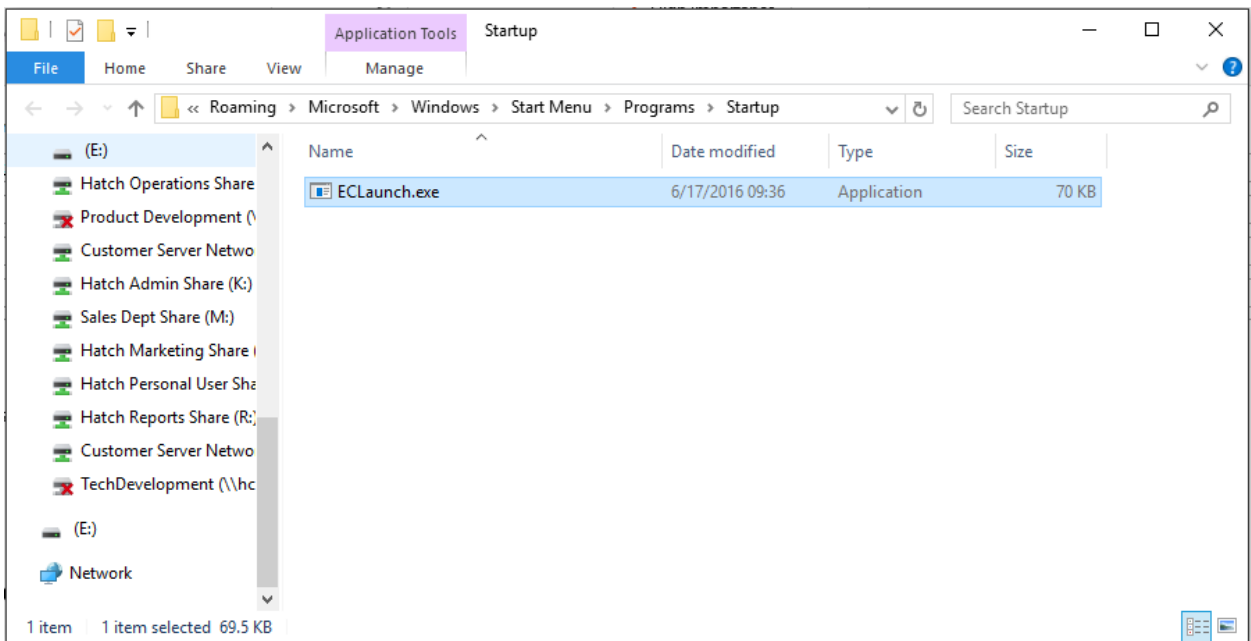


Part 4 - Modifying startup folder:

1. Download [ECLaunch.exe](https://rms.hatchearlychildhood.com/istartsmart-upgrade/ECLaunch.exe)
(<https://rms.hatchearlychildhood.com/istartsmart-upgrade/ECLaunch.exe>)
2. Right click and copy "ECLaunch.exe" to your clipboard
3. Press and hold the windows key and tap the letter "R" to open the Run command window
4. Type "shell:Startup" and press "OK"



5. This will open a window titled “**Startup**”. Paste the “**ECLaunch.exe**” file here.



6. Reboot and verify ECLaunch loads on startup